

Your localities directory



◆ EDINBURGH ◆
YOUR COUNCIL - YOUR SERVICES

Contents

Your localities directory	1
Contents	2
Welcome to your locality directory	3
Our locality map	4
Locality Services – how they are managed and delivered	5
Lifelong Learning Service.....	6
North West: lead contacts and organisational structure.....	7
North West: lead contacts and our partners	8
North East: lead contacts and organisational structure.....	9
North East: lead contacts and our partners	10
South West: lead contacts and organisational structure	11
South West: lead contacts and our partners.....	12
South East: lead contacts and organisational structure	13
South East: lead contacts and our partners.....	14
The role of Locality Leadership Teams	15
Further information.....	16

Welcome to your locality directory



As part of our transformation of services, the Council with our key partners have begun working in four new localities and more of our services will begin adapting to the new model over the coming months. Together, we're continuing to explore how we develop and deliver services in the best possible way.

With your support, our aim is to empower citizens and communities, improve the places where you live, strengthen community engagement and simplify and strengthen locality planning.

You can read more about the changes in our ['Guide to locality working'](#).

This directory provides you with your key contacts in the Locality teams along with other important local contacts in our Council services. It also provides you with the lead contacts in each locality for all of our strategic partners, who are all members of the Locality Leadership Teams.

This Directory will be regularly updated, and I hope you will find it useful.

I look forward to working with you in the coming years along with our locality managers and partners

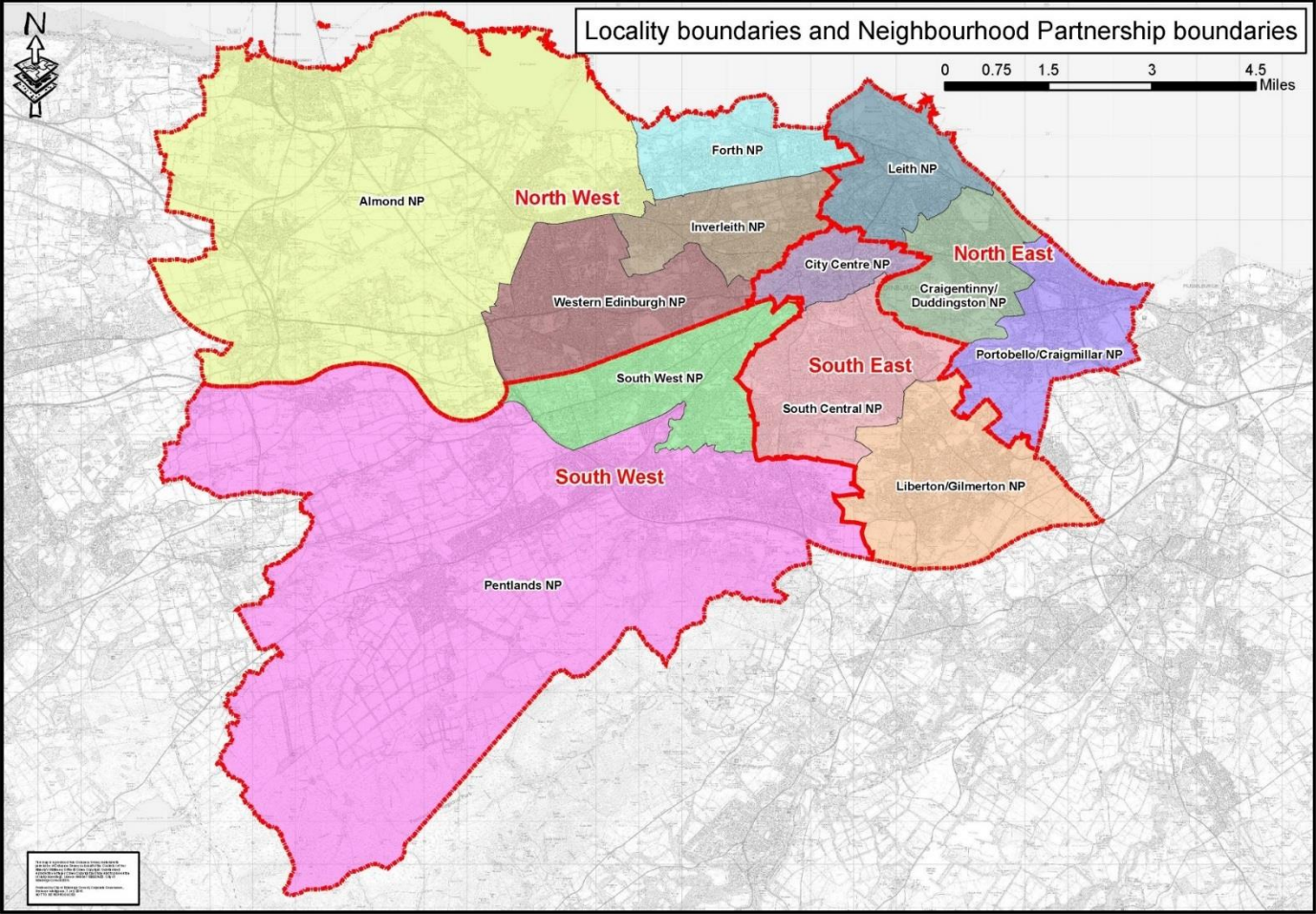
Paul Lawrence

Executive Director of Place

Our locality map

Our city is organised in four localities - North East, North West, South East and South West. All partners in Edinburgh now work within these boundaries.

Simplified locality geography enables all partners to better engage, align their services and share resources – including people and premises.



Locality Services – how they are managed and delivered

Many of our Council services are managed at a local level. The services listed below are managed directly by our Locality Managers, working closely with other local teams to ensure they are delivered in line with local needs and priorities. Each Locality also has a Health and Social Care Partnership Locality Manager.

Services that are managed and delivered locally by our locality teams are listed below. Contacts for these teams are included in this directory, along with other key local contacts for Council services and partners.

Family and Household Support

- Community safety
- Neighbourhood support service
- Family solutions

Local Housing Team

- Estate and tenancy management
- Lettings
- Housing advice and rents

Local Transport and Environment

- Parks development and park rangers service
- Environmental wardens
- Road and pathway repairs and maintenance, permits and other local road issues.
- Liaison with waste and cleansing on local priorities, community clean ups, local campaigns and initiatives.

Partnership & Information

- Libraries
- Local community planning and engagement

Lifelong Learning Service

The following services will be brought together under a Lifelong Learning Service team and managed and delivered on a Locality basis, reporting to our Locality Managers. These include:

- Local Libraries and Community Centres
- Community Planning and Community Engagement
- Community Learning and Development, including Adult Education and Youth Work
- Health and Wellbeing
- Sport & Physical Activity
- Arts and Creative Learning

These new teams are expected to be implemented in Spring 2017. At that time, the current local Partnership & Information teams will be replaced by the new Lifelong Learning Locality teams. An updated directory showing the new structures will be circulated at that time.

North West: lead contacts and organisational structure

The North West locality covers Almond, Drumbrae/Gyle, Corstophine and Murrayfield, Inverleith and Forth wards.



Peter Strong
North West Locality Manager
0131 529 5005
peter.strong@edinburgh.gov.uk

Family and Household Support Manager

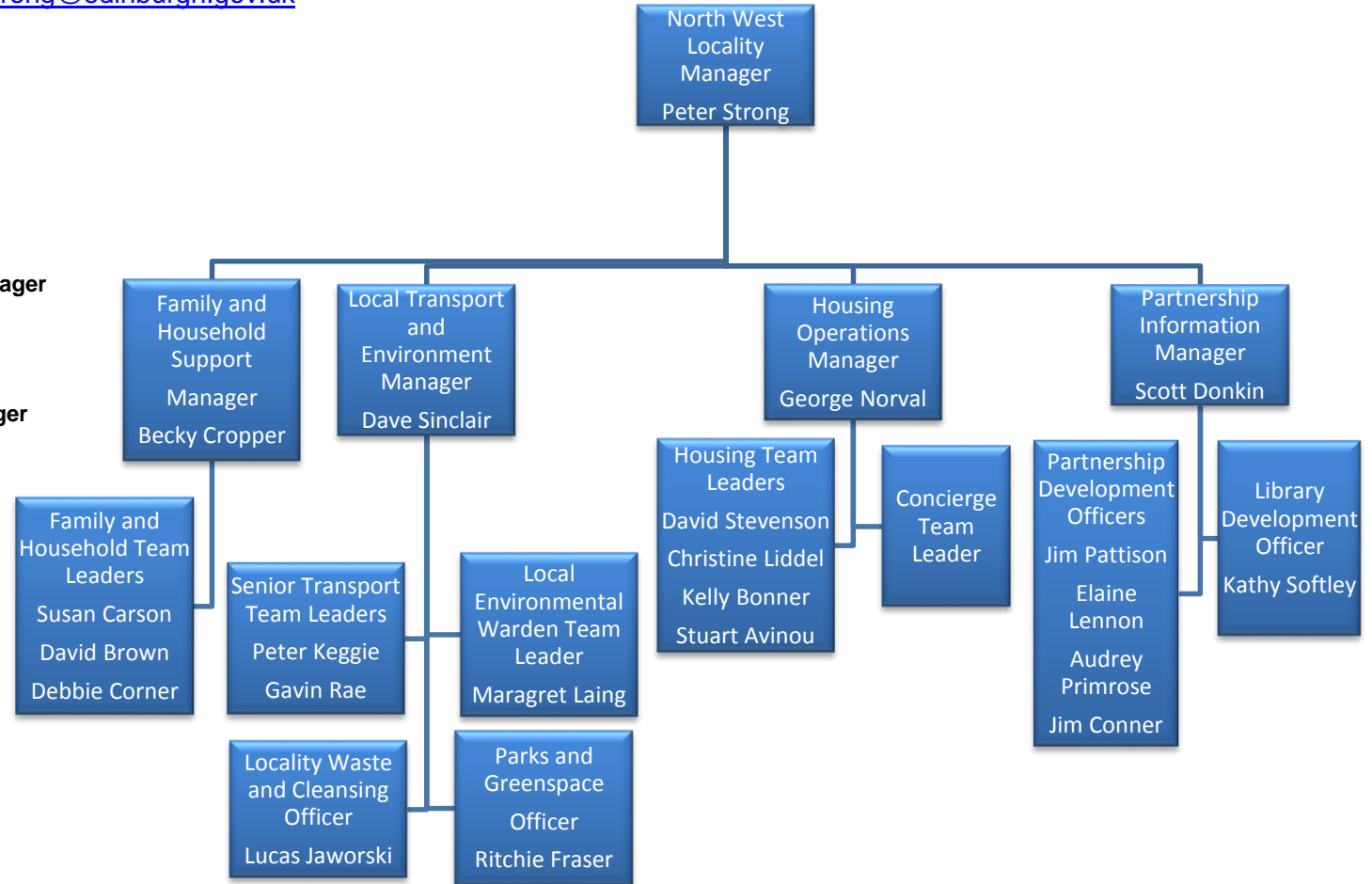
Becky Cropper
becky.cropper@edinburgh.gov.uk

Transport and Environmental Manager

Dave Sinclair
dave.sinclair@edinburgh.gov.uk

Housing Operations Manager

George Norval
george.norval@edinburgh.gov.uk



North West: lead contacts and our partners

North West Waste (including Sighthill Recycling Centre)

Alistair Holman

ali.holman@edinburgh.gov.uk

North West Street Cleansing

Andy Hunter

andy.hunter@edinburgh.gov.uk

Trade Waste Compliance Issues

Gail Dickson

gail.dickson@edinburgh.gov.uk

Locality Greenspace Team Leader

Gary Hook

gary.hook@edinburgh.gov.uk

Police Scotland

Chief Inspector Jimmy Jones

james.jones@scotland.pnn.police.uk

NHS

Dermot Gorman

dermot.gorman@nhslothian.scot.nhs.uk

Fire Scotland

James Melvin

james.melvin@firescotland.gov.uk

Edinburgh College

Sarah-Jane Linton

sarahjane.linton@edinburghcollege.ac.uk

Health and Social Care Partnership Locality Manager

Marna Green

marna.green@edinburgh.gov.uk

Voluntary Sector

Stef Milenkovic

Stef.milenkovic@evoc.org.uk

Children's Services Practice Manager/Chair of Children's Services Management Group

John Stevenson

john.stevenson@edinburgh.gov.uk

North East: lead contacts and organisational structure

The North East locality covers Craightinny/Duddingston, Leith, Leith Walk and Portobello/Craigmillar wards.



Evelyn Kilmurry (maternity cover)
North East Locality Manager
evelyn.kilmurry@edinburgh.gov.uk
 0131 529 7894

Family and Household Support Manager

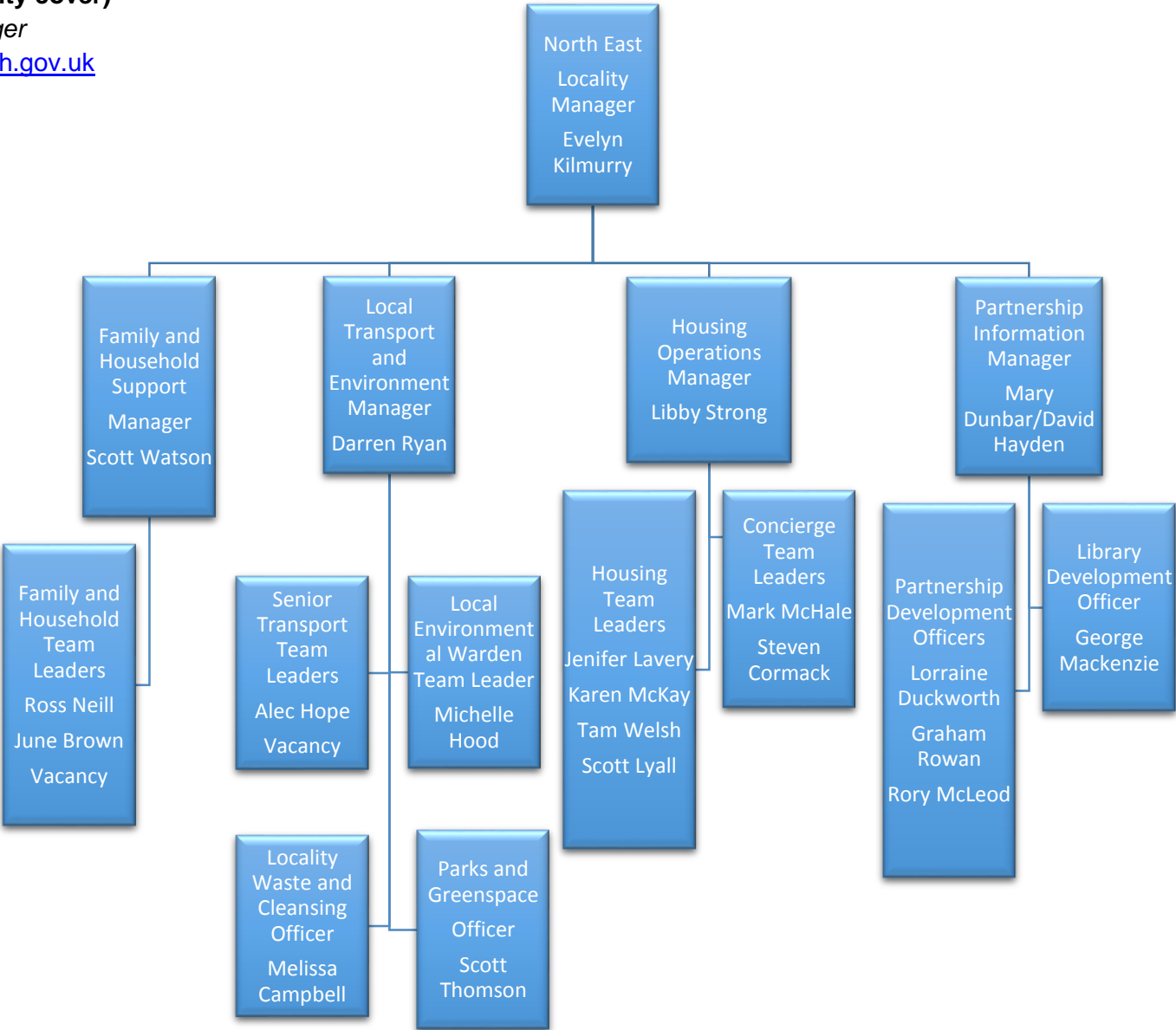
Scott Watson
scott.watson@edinburgh.gov.uk

Transport and Environmental Manager

Darren Ryan
darren.ryan@edinburgh.gov.uk

Housing Operations Manager

Libby Strong
libby.strong@edinburgh.gov.uk



North East: lead contacts and our partners

North East Waste (including Craigmillar & Seafield Recycling Centre)

Mark Stanton

mark.stanton@edinburgh.gov.uk

North East Street Cleansing

Robert Davidson / Rab Farquhar

robert.davidson@edinburgh.gov.uk / rab.farquhar@edinburgh.gov.uk

Trade Waste Compliance Issues

Gail Dickson

gail.dickson@edinburgh.gov.uk

Locality Greenspace Team Leader

Jamie McNeil

jamie.mcneil@edinburgh.gov.uk

Police Scotland

Chief Inspector Kevin Mclean

kevin.mclean@scotland.pnn.police.uk

NHS

Moyra Burns

moyra.burns@nhslothian.scot.nhs.uk

Fire Scotland

Andrew McDermott

andrew.mcdermott@firescotland.gov.uk

Edinburgh College

Jonny Pearson

jonny.pearson@edinburghcollege.ac.uk

Health and Social Care Partnership Locality Manager

Angela Lindsay

angela.lindsay@nhslothian.scot.nhs.uk

Voluntary Sector

Maria Arnold

maria.arnold@evoc.org.uk

Children's Services Practice Manager/Chair of Children's Services Management Group

Gill Lawrence

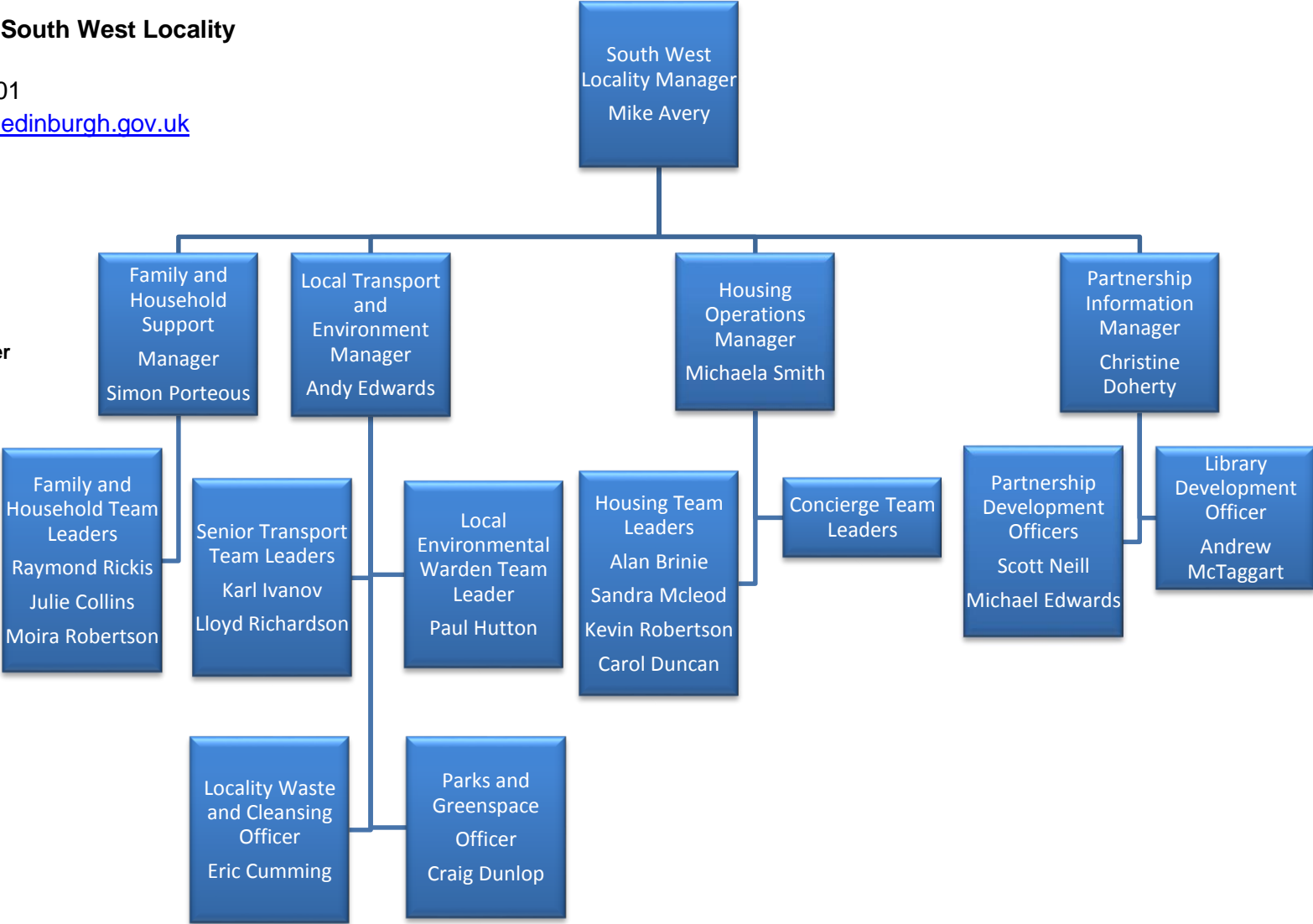
gill.lawrence@edinburgh.gov.uk

South West: lead contacts and organisational structure

The South West locality covers Colinton/Fairmilehead, Fountainbridge/Craiglockhart, Pentland Hills and Sighthill/Gorgie wards.



Mike Avery, South West Locality Manager
 0131 527 3801
mike.avery@edinburgh.gov.uk



Family and Household Support Manager
 Simon Porteous
simon.porteous@edinburgh.gov.uk

Transport and Environmental Manager
 Andy Edwards
andy.edwards@edinburgh.gov.uk

Housing Operations Manager
 Michaela Smith
michaela.smith@edinburgh.gov.uk

South West: lead contacts and our partners

South West Waste (including Sighthill Recycling Centre)

Alistair Holman

Ali.holman@edinburgh.gov.uk

South West Street Cleansing

Andy Hunter

andy.hunter@edinburgh.gov.uk

Trade Waste Compliance Issues

Gail Dickson

gail.dickson@edinburgh.gov.uk

Locality Greenspace Team Leaders

Derek Dickson

Derek.dickson@edinburgh.gov.uk

Police Scotland

Chief Inspector Helen Harrison

helen.harrison@scotland.pnn.police.uk

NHS

Dona Milne

dona.milne@nhslothian.scot.nhs.uk

Fire Scotland

John Hanlin

john.hanlin@firescotland.gov.uk

Edinburgh College

Jon Buglass

jon.buglass@edinburghcollege.ac.uk

Health and Social Care Partnership Locality Manager

Andy Shanks

Andy.shanks@edinburgh.gov.uk

Voluntary Sector

Denise Horn

denise.horn@evoc.org.uk

Children's Services Practice Manager/Chair of Children's Services Management Group

Donna Anderson

donna.anderson@edinburgh.gov.uk

South East: lead contacts and organisational structure

The South East locality covers City centre, Liberton/Gilmerton, Meadows/Morningside and Southside/Newington wards.



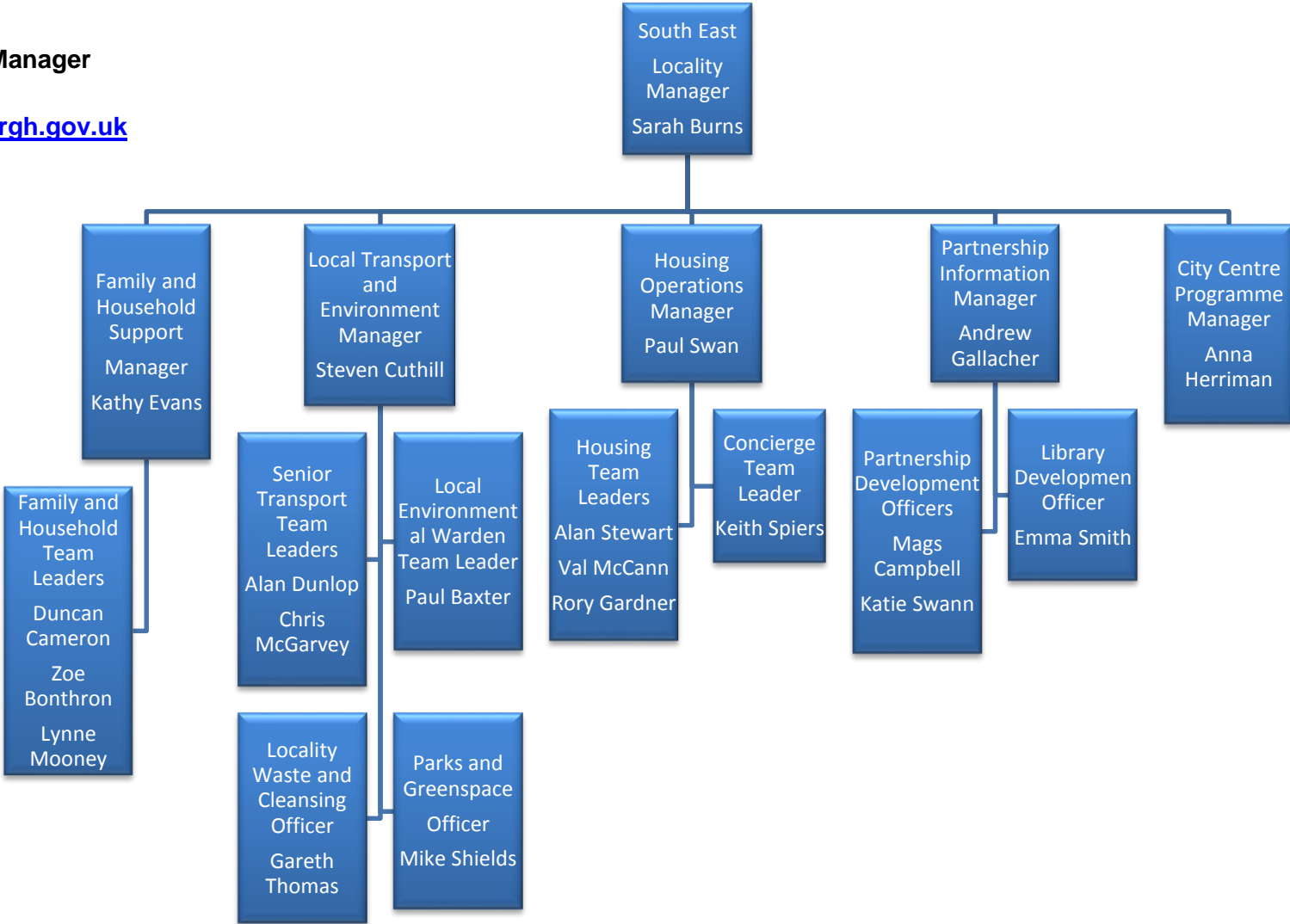
Sarah Burns
South East Locality Manager
 0131 529 7662
sarah.burns@edinburgh.gov.uk

Family and Household Support Manager
 Kathy Evans
kathy.evans@edinburgh.gov.uk

Transport and Environmental Manager
 Steven Cuthill
steven.cuthill@edinburgh.gov.uk

Housing Operations Manager
 Paul Swan
paul.swan@edinburgh.gov.uk

City Centre Programme Manager
 Anna Herriman
anna.herriman@edinburgh.gov.uk



South East: lead contacts and our partners

South East Waste (including Craigmillar & Seafield Recycling Centres)

Mark Stanton

mark.stanton@edinburgh.gov.uk

South East Street Cleansing

Robert Davidson/Rab Farquhar

robert.davidson@edinburgh.gov.uk / rab.farquhar@edinburgh.gov.uk

Trade Waste Compliance Issues

Gail Dickson

gail.dickson@edinburgh.gov.uk

Locality Greenspace Team Leader

Peter Watson

peter.watson@edinburgh.gov.uk

Children's Services Practice Manager/Chair of Children's Services Management Group

Andrew McWhirter

andrew.mcwhirter@edinburgh.gov.uk

Police Scotland

Chief Inspector Mark Rennie

mark.rennie2@scotland.pnn.police.uk

NHS

Moyra Burns

moyra.burns@nhslothian.scot.nhs.uk

Fire Scotland

Alex Hume

alex.hume@firescotland.gov.uk

Edinburgh College

Michael Jeffrey

michael.jeffrey@edinburghcollege.ac.uk

Health and Social Care Partnership Locality Manager

Nikki Conway

nikki.conway@edinburgh.gov.uk

Voluntary Sector

EVOC - Ian Brooke

ian.brooke@evoc.org.uk

South East Voluntary Sector Forum - Peter Carruthers

manager@seag.uk.net

The University of Edinburgh

Moira Gibson

Moira.gibson@ed.ac.uk

The role of Locality Leadership Teams

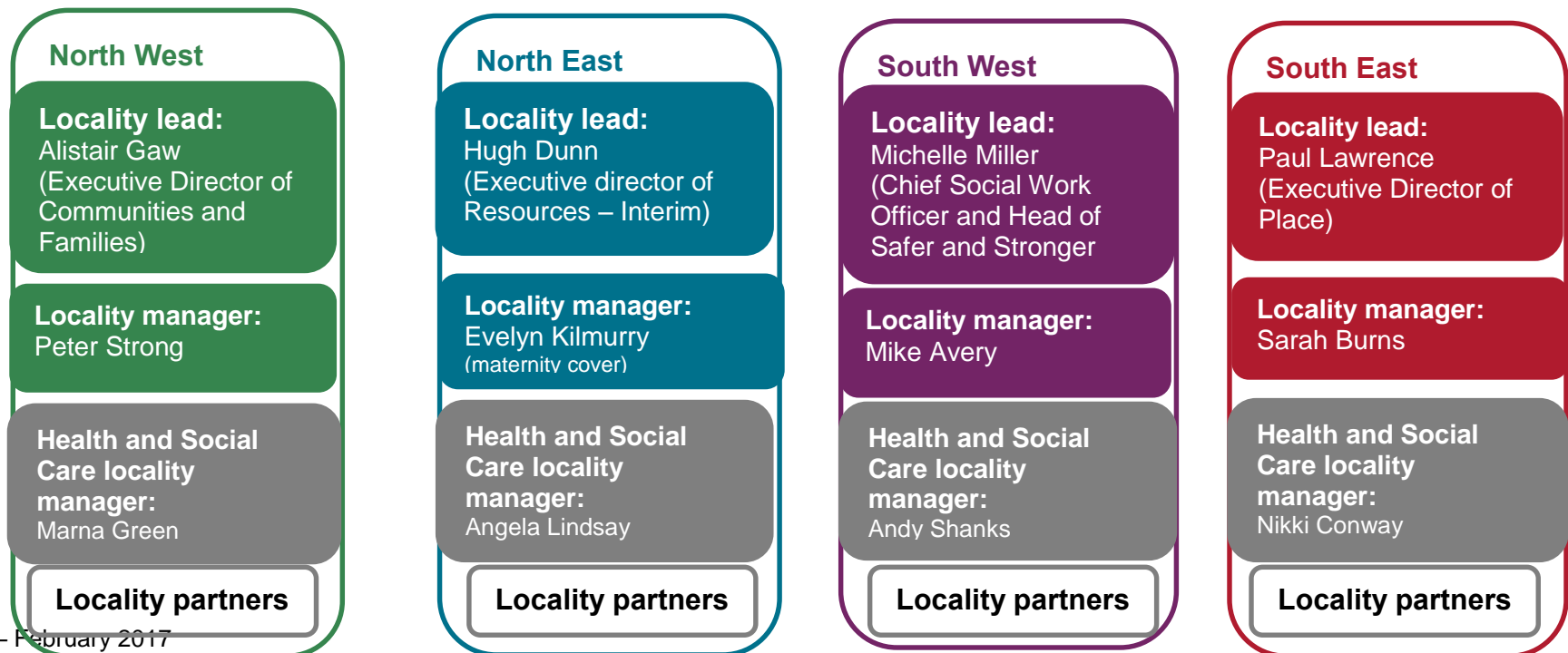
Locality Leadership Teams have been established to support partnership working, coordinate, develop and deliver efficient and effective services throughout the four localities.

These teams have a critical role in ensuring that the services in their area work together effectively to 'do whatever it takes' to improve outcomes and deliver responsive, customer focused services for local people in their area. They will not focus on 'business as usual', or managing operational service delivery or performance. Rather,

they are focused on innovation, change and creative practice, and leading the reform of local public services. They will ensure that effective community engagement and consultation are put at the heart of service design and delivery.

Each Locality Leadership team is led by an Executive Director of the Council and includes the Locality Manager, the Health & Social Care Partnership Locality Manager, Police Scotland, NHS, Fire and Rescue, Edinburgh College and the Third sector.

Locality Leadership Teams



Further information

Please read our [Guide to locality working](#)

We want to hear from you! If you have ideas or suggestions about this directory, please contact the [localities project team](#).